

KZ_K

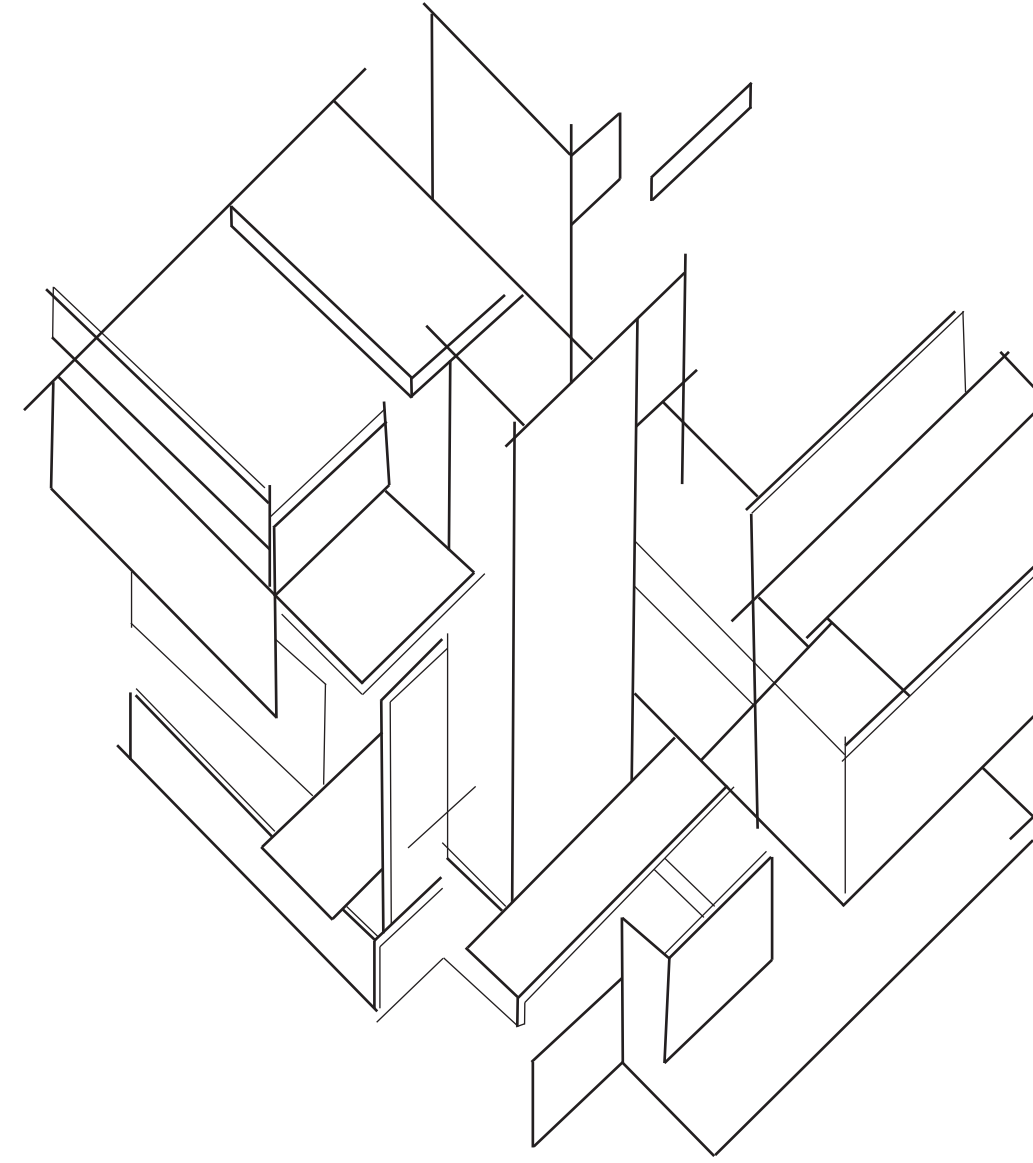
STUDIO | NEW YORK

2023 | WARM CYCLE LOOKBOOK

CORE + TRANSFORMATIONAL HABITS

DE STIJL 3D COLLECTION

DE STIJL 3D COLLECTION
WARM CYCLE . 23



TWO VECTORS OF *DE STIJL*:

"THE OBJECTIVE OF NATURE IS THE CREATION OF HUMANITY; THE OBJECTIVE OF HUMANS IS THE CREATION OF ART."

THE IDEA OF ART AS A SEPARATE ENTITY FROM LIVING MUST DISAPPEAR – DESIGN DEMANDS TO FOLLOW CREATIVE LAWS BASED ON FIXED PRINCIPLES – ECONOMICS, MATHEMATICS, TECHNIQUE, CONTEXT, FUNCTION, MATERIALS.

IN 1924, THE HAPPILY WIDOWED, AND EARLY INDEPENDENT, FEMININE FORCE, TRUUS SCHRODER TOOK HER NEW FOUND FREEDOM (BOTH SOCIALLY AND FINANCIALLY) TO DIVE FULLY INTO THE INTRIGUING, PRO ABSTRACT, DE STIJL ("THE STYLE" AVANT-GARDE GROUP, LED BY MONDRIAN AND VAN DOESBERG) ART AND ARCHITECTURE MOVEMENT, HIRING DESIGNER GERRIT RIETVELD TO BUILD A HOME IN UTRECHT THAT HUED FAITHFULLY TO THE RADICAL TENANTS OF THE GROUP'S DESIGN ETHOS.

- KZ_K



IN THIS HOUSE, AND THE CONCEPTS AND DEVELOPMENTS THAT COMPOSE IT, KAROLINA AND JESSE VISITED TO FIND CREATIVE TREASURES; THEY WERE MOVED BY A MYRIAD OF DESIGN ASPECTS, INCLUDING VARYING LEVELS OF FACADE OPACITY, MULTI FUNCTIONALITY IN DISAPPEARING AND EXPANDING WALLS, ODDLY COUNTER-POSING ANGLES, AND A WHOLE, COHERENT WORK OF ARTISTIC CREATION (FROM THE FURNITURE TO THE EXTERIOR DESIGN VOLUME).

- KZ_K





O N E

THE MAISON D'ARTISTE EXHIBIT, ELABORATED BY DE STIJL MEMBERS, VAN ESTEREN AND VAN DOESBURG, WAS SHOWN AS PART OF "L'EFFORT MODERNE" SHOW AT THE ROSENBERG GALLERY, 1923.

THE PROJECT INCLUDED A SERIES OF AXONOMETRIC DRAWINGS, HYPOTHETICAL ARCHITECTURAL CONSTRUCTS, EACH COMPRISING AN ASYMMETRICAL CLUSTER OF ARTICULATED PLANAR ELEMENTS SUSPENDED IN SPACE ABOUT A VOLUMETRIC CENTER.

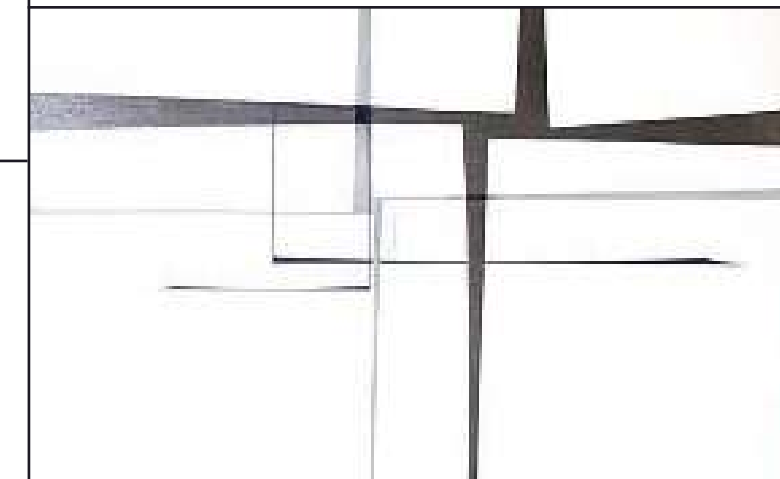
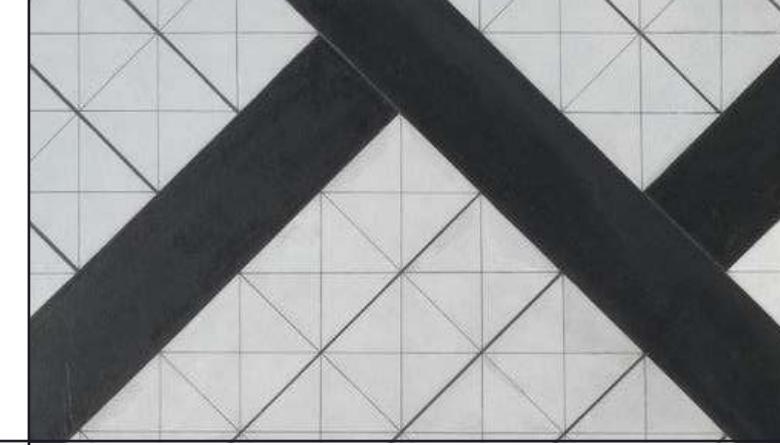
AIM: TO SPATIALLY EXPERIENCE THE NEO PLASTIC VISION, WHICH ABOVE ALL ELSE, COMMUNICATED A SENSE OF FLOATING, VARIABLE CONNECTION BETWEEN SPACES, AND A PRECISE THEOSOPHICAL RELATIONSHIP BETWEEN THE HORIZONTAL AND VERTICAL PLANES.

WE FOCUSED ON THE IDEA OF THE FLUIDITY BETWEEN THE SPACES TO FACILITATE SOCIAL RELATIONSHIPS, PERMEABILITY BETWEEN ROOMS, ANTI-CUBISM, IN SEARCH OF AND IN STIMULATION OF RIDDING THE WORLD OF THE DIVISION BETWEEN LIFE AND ART.

AT THE STUDIO, WE CONNECT WITH THE EMPHASIS ON A HOME AS A PLACE OF ACTIVITY RATHER THAN A PLACE OF SHELTER. LIFE IN AN "HABITA" IS NO LONGER IN THE MODERN WORLD AN ESCAPE FROM THE TORMENTS OF NATURE, BUT RATHER TO BRING LIFE AND PRODUCTIVITY TO THE INHABITING SPACE: TO ENGENDER SOCIETY THROUGH INTERIOR SPACES.

DESIGN PERSPECTIVES:

- PIECES THAT CAN BE CONVERTED AND USED FOR MANY FUNCTIONS (SALLE COMMUNE) FOCUS ON CONVERTIBILITY
- WINDOWS ALLOWING LIGHT IN, SHEER ELEMENTS TO ALLOW YOU TO LET LIGHT INTO DEEPER LAYERS OF GARMENTS



L O O K

1

GLAZING CINCH TRENCH
COTTON VOILE
BLACK
ALSO AVAILABLE IN: OFF-WHITE

GLAZING RAGLAN BLOUSE
COTTON VOILE
BLACK
ALSO AVAILABLE IN: OFF-WHITE

BALSA PANT
TECH GEORGETTE
NAVAL
ALSO AVAILABLE IN: BEACHWOOD

M A I S O N D ' A R T I S T E



LOOK

2

GLAZING RAGLAN BLOUSE
COTTON VOILE
BLACK
ALSO AVAILABLE IN: OFF-WHITE

BALSA PANT
TECH GEORGETTE
NAVAL
ALSO AVAILABLE IN: BEACHWOOD

MAISON D'ARTISTE



LOOK

3

GLAZING RAGLAN BLOUSE
COTTON VOILE
BLACK
ALSO AVAILABLE IN: OFF-WHITE

PLANAR SARONG
ECO TECH CREPE
MIDNIGHT SLATE
ALSO AVAILABLE IN: IVORY

MAISON D'ARTISTE



LOOK

4

PLANAR SARONG
ECO TECH CREPE
MIDNIGHT SLATE
ALSO AVAILABLE IN: IVORY

PLANAR PANT
ECO TECH CREPE
IVORY
ALSO AVAILABLE IN: MIDNIGHT SLATE

MAISON D'ARTISTE



LOOK

5

MAISON D'ARTISTE



PLANAR TUNIC
ECO TECH CREPE
MIDNIGHT SLATE
ALSO AVAILABLE IN: IVORY

PLANAR PANT
ECO TECH CREPE
IVORY
ALSO AVAILABLE IN: MIDNIGHT SLATE



LOOK

6

MAISON D'ARTISTE

PLANAR TOP
ECO TECH CREPE
IVORY
ALSO AVAILABLE IN: MIDNIGHT SLATE

PLANAR PANT
ECO TECH CREPE
IVORY
ALSO AVAILABLE IN: MIDNIGHT SLATE

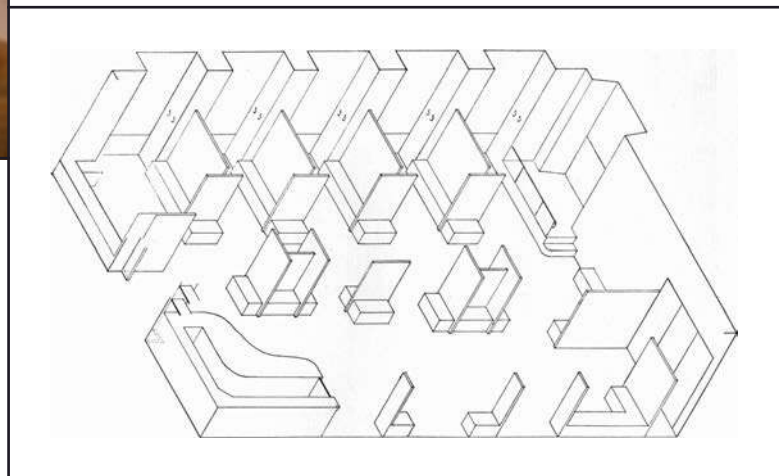
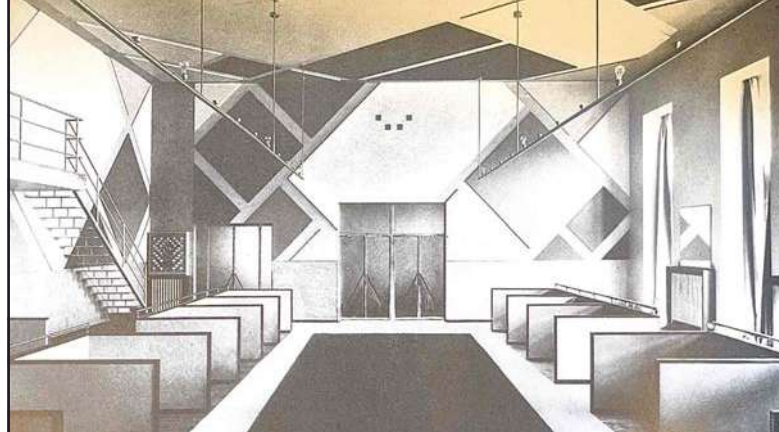


CAMPAIGN SHOT AT RIMADESIO NEW YORK



● MAISON D'ARTISTE





VAN DOESBERG'S INTERIOR DESIGN FOR CAFÉ L'AUBETTE (ONE OF ONLY TWO KEY ARCHITECTURAL DE STIJL PROJECTS) WAS DOMINATED AND DISTORTED BY THE LINES OF A HUGE DIAGONAL RELIEF OR COUNTER-COMPOSITION, PASSING OBLIQUELY OVER THE INTERNAL SURFACES.

A CAFÉ WITH FOUR FLOORS, A CAFÉ, A BAR, A DANCE HALL WITH A CABARET IN THE BASEMENT, COLORED PLANES WERE SLIGHTLY RAISED FROM THE WALLS WITH INTERLOCKING BANDS THAT CREATED DEPTH AND CREATED SEPARATE SECTIONS, A MULTI-FUNCTIONAL SET OF SPACES, NETWORKED VIA MATERIALS AND CRAFTSMANSHIP.

THIS FRAGMENTATION THROUGH RELIEF WAS COMPLEMENTED BY THE FACT THAT FURNISHING "WAS FREE OF ANY DECOR," INSTEAD THERE WERE "STANDARD" BENTWOOD CHAIRS AND UTILITY SPATIAL FUNCTIONS. FINISHED IN 1929, IT CLOSED THE END OF THE DE STIJL PERIOD.

DESIGN PERSPECTIVES:

- CREATE PLANES OF COLOR WITHIN A GARMENT. IN THE CAFÉ'S CASE, IT WAS RAISED FROM THE WALL TO CREATE DIMENSION, AND THEN HAD INTERLOCKING BANDS TO CREATE SEPARATE SECTIONS: CREATE BLOCKING INTERNALLY IN THE GARMENT, OR TOPSTITCH INSIDE GARMENT WITH TONAL THREAD, OR CONTRAST THREAD TO BRING IN COLOR, OR ALL OF THE ABOVE
- COUNTER-COMPOSITION – TAKE THE TYPICAL REQUIRED FORM, AND DESIGN DIAGONALLY AGAINST

LOOK

7

ABSTRACTION LEATHER T-SHIRT
GEO PERFORATED LEATHER
DARK WILLOW GREEN
ALSO AVAILABLE IN: BLACK

ABSTRACTION LEATHER PANT
GEO PERFORATED LEATHER W/ LINING
DARK WILLOW GREEN
ALSO AVAILABLE IN: BLACK

CAFÉ L'AURORE



L O O K

8

C A F É L ' A U B E T T E

ABSTRACTION LEATHER JACKET
GEO PERFORATED LEATHER
BLACK
ALSO AVAILABLE IN: DARK WILLOW GREEN

ORIENTATION PANT
TEXTURED WEAVE
HEATHERED ONYX W/ BLACK



LOOK

9

TENSION SWEATER
COTTON BLEND KNIT | 35% COTTON 45% RECYCLED POLY
BLACK LEAD
ALSO AVAILABLE IN: FIELD | NATURAL WHITE

ABSTRACTION LEATHER PANT
GEO PERFORATED LEATHER W/ LINING
DARK WILLOW GREEN
ALSO AVAILABLE IN: BLACK

C A F É L ' A U B E T T E



LOOK

10

ORIENTATION REVERSIBLE JACKET
TEXTURED WEAVE | COTTON VOILE
HEATHERED ONYX W/ BLACK

ORIENTATION PANT
TEXTURED WEAVE
HEATHERED ONYX W/ BLACK

C A F É L ' A U B E T T E



LOOK

11

C A F É L ' A U B E T T E

RELIEF TOP
LIGHT RIB KNIT
EUCALYPTUS
ALSO AVAILABLE IN: NIGHT BLUE

ABSTRACTION LEATHER PANT
GEO PERFORATED LEATHER W/ LINING
DARK WILLOW GREEN
ALSO AVAILABLE IN: BLACK



LOOK

12

COLLIDING REVERSIBLE PARKA
ECO TENCEL COTTON
WILLOW GREEN
ALSO AVAILABLE IN: MIDNIGHT SLATE

OUD PANT
STRETCH COTTON TWILL
BONE
ALSO AVAILABLE IN: COAL

CAFÉ L'AUBETTE



LOOK

13

COLLIDING TOP
ECO TENCEL COTTON
WILLOW GREEN
ALSO AVAILABLE IN: MIDNIGHT SLATE

OUD PANT
STRETCH COTTON TWILL
BONE
ALSO AVAILABLE IN: COAL

C A F É L ' A U B E T T E



LOOK

14

C A F É L ' A U B E T T E

OLD FORM DRESS
COTTON RIB KNIT | ECO TENCEL COTTON
CREAM / OFF-WHITE
ALSO AVAILABLE IN: BLACK / MIDNIGHT SLATE



L O O K

15

C A F É L ' A U B E T T E

ODU FORM JACKET
STRETCH COTTON TWILL | COTTON RIB KNIT | ECO TENCEL COTTON
BONE / CREAM W/ OFF WHITE
ALSO AVAILABLE IN: COAL / BLACK W/ MIDNIGHT SLATE

ODU PANT
STRETCH COTTON TWILL
BONE
ALSO AVAILABLE IN: COAL





● C A F É L ' A U B E T T E



C A M P A I G N S H O T A T R I M A D E S I O N E W Y O R K



T H R E E

DEFINITION: "A COMPLETE AND TOTAL WORK OF SPATIAL ART," WHERE THE EXTERIOR PERFECTLY COORDINATES WITH EVERY ELEMENT OF THE INTERIOR.

THE ARTIST'S (OR ARCHITECT'S) GOAL IS TO PROVIDE A COMPLETE SET OF AESTHETIC FUNCTIONALITIES FOR THE CLIENT: DESIGNING EVERY COMPONENT, FROM FURNITURE TO GLASSWARE, TO CLOTHING, INTEGRATED INTO A WHOLE.

THE RIETVELD, SCHRÖDER HOUSE IS AN EXAMPLE OF THIS: AN OVERTLY FLEXIBLE SPACE, THE GROUND FLOOR IS AN OPEN DESIGN. THE UPSTAIRS CONTAINS MANY SLIDING PANELS SIMILAR TO THE RECTANGULAR ELEMENTS IN DE STIJL PAINTINGS, ALLOWING FLUIDITY AND TRANSFORMABILITY IN THE SPACE.

"ALL OF THE SENSES, ACTING IN HARMONY, ARE AWAKENED AND LEAD TO MORE PROFOUND APPRECIATION AND EXPERIENCE."

—TRUSS SCHRODER RESIDENT

DESIGN PERSPECTIVES:

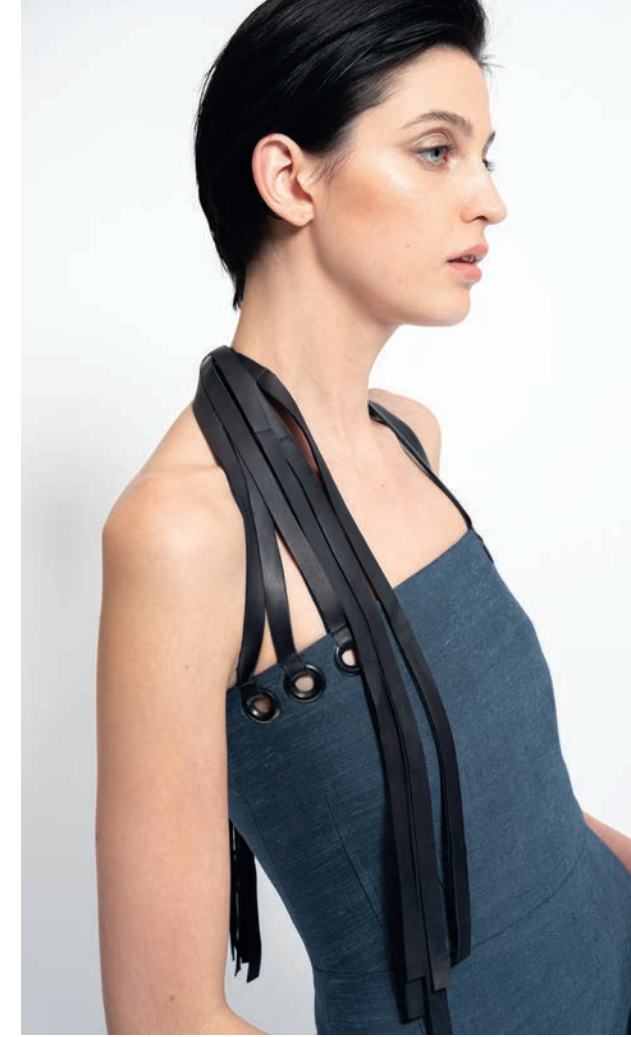
- EACH PIECE MAY BE INTERCHANGEABLE AND WORN TOGETHER
- FOCUS ON REVERSIBILITY AS CENTRAL GOAL, WHILE MAKING THE PIECES COHESIVE DOWN TO THE SMALLEST DETAILS
- DESIGN INTERIOR POPS OF COLOR OR HIGHLIGHTS TO DETAIL THE SMALLEST OF DETAILS
- CONVERTIBILITY PURPOSE: PIECES THAT MAY BE REMOVED TO ALLOW AN ALTERNATIVE FUNCTIONALITY, OR WAYS TO WEAR AND FOR WHAT USE

LOOK

16

GESAMTKUNSTWERK

RIETVELD DRESS
ECO TENCEL TWILL W/ LAMBSKIN PLONGE NECK TIES
BLUE NAVY W/ MIDNIGHT SLATE



LOOK

17



SCHRODER LEATHER JACKET
LAMBSKIN PLONGE
MIDNIGHT SLATE
ALSO AVAILABLE IN: RED CLAY

RIETVELD DRESS
ECO TENCEL TWILL W/ LAMBSKIN PLONGE NECK TIES
BLUE NAVY W/ MIDNIGHT SLATE

GESAMTKUNSTWERK



LOOK

18

GESAMTKUNSTWERK

SCHRODER LEATHER VEST
LAMBSKIN PLONGE
MIDNIGHT SLATE
ALSO AVAILABLE IN: RED CLAY

RIETVELD PANT
ECO TENCEL TWILL
BLUE NAVY
ALSO AVAILABLE IN: SKY BLUE | BEACHWOOD



LOOK

19

ELEMENTARY TOP
COTTON TWO-TONE KNIT
SKY BLUE

ELEMENTARY PANT
COTTON TWO-TONE KNIT
SKY BLUE

G E S A M T K U N S T W E R K



LOOK

20

G E S A M T K U N S T W E R K

UTRECHT REVERSIBLE JACKET
ECO TENCEL TWILL
SKY BLUE

UTRECHT PANT
ECO TENCEL TWILL
SKY BLUE





● G E S A M T K U N S T W E R K

C A M P A I G N S H O T A T R I M A D E S I O N E W Y O R K



F O U R

THESE ARE SPACES DEVELOPED AROUND A CENTRALIZED VOLUME THAT ARE TELEMETRICALLY (LIKE A TELESCOPE) EXPANDED FROM THE CORE IN HORIZONTAL AND VERTICAL EXPANSIONS, THAT NEVER INTERSECT.

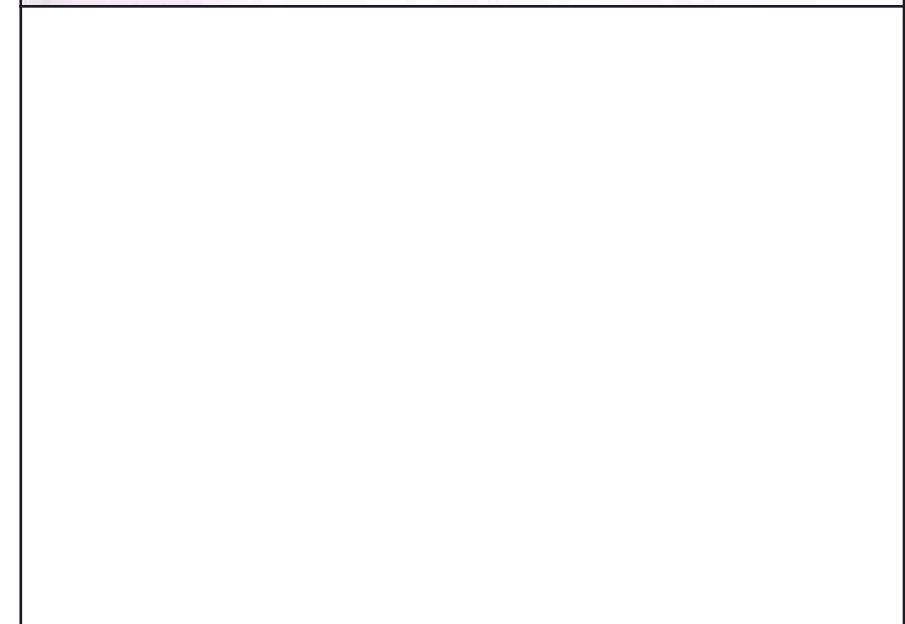
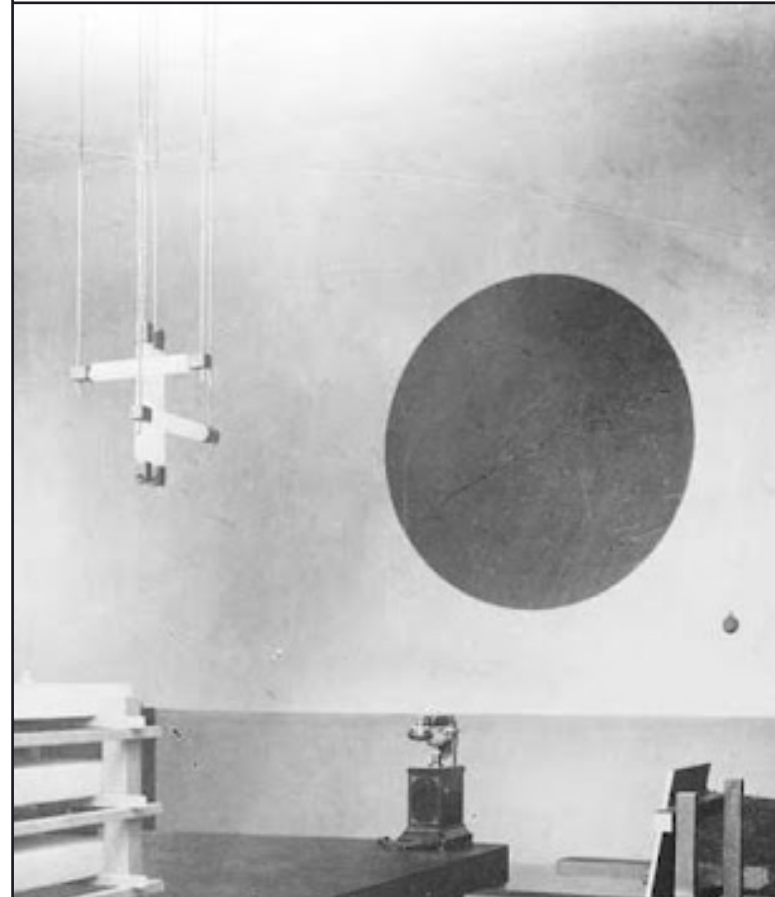
ELEMENTARIZED: THE PROCEDURE OF EXPLAINING A COMPLEX PHENOMENON BY REDUCING IT TO SIMPLE, ELEMENTAL UNITS.

IDEALLY, ONE BRINGS IN EACH PARTICULAR UNIT OF SPACE, AS DEFINED BY THE SUBSTANCE OF MATERIAL AROUND IT, INTO AN ELEMENTAL, OBSERVABLE UNIQUE UNIT, THEN BUILD OUTWARD.

THESE TENANTS CAN BE EXPRESSED COHERENTLY IN RIETVELD'S DR. HARTOG'S STUDY IN MAARSENEN IN 1920 – EACH PIECE OF FURNITURE INCLUDING THE SUSPENDED LIGHT FITTING IS 'ELEMENTARIZED' TO IMPLY AN INFINITE SERIES OF COORDINATES IN SPACE.

DESIGN PERSPECTIVES:

- PLANES THAT EXTEND PAST A NORMAL POINT: EXPAND THE TOP SLEEVE OF A JACKET SLIGHTLY FURTHER THAN THE UNDER SLEEVE TO CREATE THE LENGTH DIFFERENCE
- CREATING PIECING WITHIN A GARMENT THAT STEMS FROM THE CENTER OF THE GARMENT
- GATHERING OR PLEATING THAT STEMS FROM THE CENTRAL PART OF THE GARMENT, TO CREATE THE FOCUS ON EXPANDING FROM THE CENTER
- CREATE DIMENSION WITH THE DIFFERENTIATION OF PLANES, WHILE KEEPING AN UNDERLYING MONOCHROMATIC MOMENT
- CREATE A GLAZED EFFECT WITH LAYERING OR PANELING. THEY PAINTED GLASS WITH WHITE PAINT, COULD BE INTERESTING TO PAINT IN THIS CAPSULE ON CLOTHING TO CREATE THE GLAZED EFFECT



LOOK

21

BALSA BLOUSE
TECH GEORGETTE
SKY BLUE
ALSO AVAILABLE IN: OFF WHITE

VERTICAL PANT
LINEAR VISCOSE KNIT
CERULEAN

TELEMENTARIZED / ELEMENTARIZED



LOOK

22

REDUCTIVE DRESS
COTTON BLEND PEBBLE KNIT
ASH BLUE
ALSO AVAILABLE IN: BLONDE

TELEMENTARIZED / ELEMENTARIZED



LOOK

23

REDUCTIVE JACKET
COTTON BLEND PEBBLE KNIT
ASH BLUE
ALSO AVAILABLE IN: BLONDE

REDUCTIVE DRESS
COTTON BLEND PEBBLE KNIT
ASH BLUE
ALSO AVAILABLE IN: BLONDE

TELEMENTARIZED / ELEMENTARIZED



L O O K

24

T E L E M E N T A R I Z E D / E L E M E N T A R I Z E D

REDUCTIVE JACKET
COTTON BLEND PEBBLE KNIT
ASH BLUE
ALSO AVAILABLE IN: BLONDE

ARTICULATE V-NECK KNIT
VISCOSE RIB KNIT
CERULEAN

VERTICAL PANT
LINEAR VISCOSE KNIT
CERULEAN



LOOK

25

TELEMENTARIZED / ELEMENTARIZED



ARTICULATE V-NECK KNIT
VISCOSERIB KNIT
CERULEAN

VERTICAL PANT
LINEAR VISCOSERIB KNIT
CERULEAN



LOOK

26



COMMUNE T-SHIRT
CONDENSED RIB KNIT W/ NATURAL DYE
BEACHWOOD W/ CLAY DIP DYE

COMMUNE WRAP SKIRT
ORGANIC VINTAGE COTTON W/ NATURAL DYE
BEACHWOOD W/ CLAY DIP DYE

TELEMENTARIZED / ELEMENTARIZED



LOOK

27

CENTRALIZED DRESS
ORGANIC VINTAGE COTTON | CONDENSED RIB KNIT
BEACHWOOD
ALSO AVAILABLE IN: BLACK

TELEMENTARIZED / ELEMENTARIZED



L O O K

28

T E L E M E N T A R I Z E D / E L E M E N T A R I Z E D



TELEMENTARY CROP JACKET
QUILTED TECH ORGANZA
BEACHWOOD
ALSO AVAILABLE: BLACK

OUD PANT
STRETCH COTTON TWILL
BONE
ALSO AVAILABLE IN: COAL



LOOK

29

TELEMENTARY PARKA
QUILTED TECH ORGANZA
BEACHWOOD
ALSO AVAILABLE: BLACK

REDUCTIVE PANT
COTTON BLEND PEBBLE KNIT
BLONDE
ALSO AVAILABLE IN: ASH BLUE

TELEMENTARIZED / ELEMENTARIZED





● T E L E M E N T A R I Z E D
/ E L E M E N T A R I Z E D

C A M P A I G N S H O T A T R I M A D E S I O N E W Y O R K





W **CAMPAIGN & E-COMMERCE**
A **PHOTOGRAPHER**
 ZIHAN ZHUANG

R **VIDEOGRAPHER**
 LEXI CHANG & SERRERA HU

M **MAKE UP**
 RISA MIYAMOTO

C **HAIR**
 SERENA TAKEI

Y **PRODUCTION MANAGER**
 ERIKA CHONG-MUÑOZ

C **STYLE OUT**
 ESTEFANIA CASTAÑEDA
 CATERINA CAPOCOTTA

L **MODEL**
 ERIN TRESCHER - FORD MODELS

E **CAMPAIGN SHOOT LOCATION**
 RIMADESIO NEW YORK

·
2
3

TRANSFORMATIONAL HABITS

HAB • IT

1. A SETTLED OR REGULAR TENDENCY OR PRACTICE, ESPECIALLY ONE THAT IS HARD TO GIVE UP
2. A GARMENT WORN BY A MEMBER OF A PARTICULAR ORDER, IN THE KZ_K CASE, THE ORDER OF MODERN WOMEN

AS EDITORIALIZED BY FASHION CRITIC ROBERT CORDERO OF THE BUSINESS OF FASHION, IN HIS ARTICLE *TRANSFORMATIONAL VALUE*, COVERING OUR INAUGURAL COLLECTION: KZ_K STUDIO CREATES, “DIRECTIONAL AND VERSATILE CLOTHES THAT BRAVELY TACKLE WOMENS’ SHIFTING PERCEPTION OF REAL FASHION VALUE... ‘WE HAVE TAKEN THIS DEEPLY TO HEART BY ENABLING EACH PIECE TO BE WORN IN VARIOUS, TRULY DISTINCT WAYS,’ NOTES DESIGNER KAROLINA ZMARLAK.”

IN KZ_K TRANSFORMATIONAL HABITS, WE HAVE TAKEN THE CONCEPTUAL UNDERPINNING OF OUR DESIGN ORIGINS – CREATING PIECES THAT ARE MULTI-FUNCTIONAL, VERSATILE, REVERSIBLE – ALL WITH TECHNICALLY ADVANCED FABRICS, SUCH AS WASHABLE STRETCH LEATHERS – TO DEVELOP A PRACTICAL SET OF TECHNIQUES AND JACKET TYPOLOGIES. THE HABITS ARE OUR FOUNDATIONAL OUTERWEAR PIECES. THE RESULT: A DESIGN-MINDED AESTHETIC OF MINIMALIST UTILITY, AIMED AT MODERN WOMEN WHO ARE BOTH IN MOTION, AND IN A CONSTANT STATE OF CREATIVE PRODUCTIVITY.

WITH CORE VALUABLES

HIGHLY DEVELOPED FOR SLEEK SILHOUETTES AND FIT: ENDURING UNDERPINNINGS THAT PAIR WITH CYCLE COLLECTIONS AND TRANSFORMATIONAL HABITS.

DESIGNED FOR CONTINUITY IN FINISHED EXECUTION AND COMFORT. FABRICS IN TIMELESS NEUTRALS FOR SUSTAINED, INTEGRATABLE WEAR.

OUR CORE VALUABLES, ARE SUBTLY RE-ENVISIONED BY NEW COLLECTION CONCEPTS: ART AND ARCHITECTURE DRIVEN DESIGN, COLORS, AND NEW TECHNOLOGICALLY ADVANCED FABRICS OF DOUBLE FACED QUALITY, AND WASHABLE LEATHER.

ALL CORE IS FOUNDATIONALLY CREATED FOR ONE TO BUILD A PERSONALIZED, UNIQUE KZ_K CAPSULE.



DRAPE LEATHER JACKET
WASHABLE LEATHER
OFF-WHITE
ALSO AVAILABLE IN: BLACK | SMOKE BLUE | NAVAL | RED CLAY

V-NECK TUNIC CAMI
SILK CHARMEUSE
TAUPE GREY
ALSO AVAILABLE IN: BLACK | MIDNIGHT | OFF WHITE | HAZE | RED CLAY

VICTORIA PANT
TECH CREPE
SAGE
ALSO AVAILABLE IN: BLACK | MIDNIGHT





V-NECK TUNIC CAMI
SILK CHARMEUSE
OFF-WHITE
ALSO AVAILABLE IN: BLACK | MIDNIGHT | HAZE | TAUPE GREY | RED CLAY

VICTORIA PANT
TECH CREPE
SAGE
ALSO AVAILABLE IN: BLACK | MIDNIGHT





TECHNO JACKET
TECH ORGANZA / TECH PIQUE
WHITE
ALSO AVAILABLE IN: BLACK

ARCH CINCH TOP
PEBBLE TECH CREPE
IVORY
ALSO AVAILABLE IN: BLACK | NAVY | BONE | THYME | BLONDE

SLIM PANT
POWER STRETCH SUITING
WHITE
ALSO AVAILABLE IN: BLACK | TAUPE LINEN | NAVY | HAZE





ARCH CINCH TOP
PEBBLE TECH CREPE
IVORY
ALSO AVAILABLE IN: BLACK | NAVY | BONE | THYME | BLONDE

SLIM PANT
POWER STRETCH SUITING
WHITE
ALSO AVAILABLE IN: BLACK | TAUPE LINEN | NAVY | HAZE





GLOVE JACKET
WASHABLE LEATHER
SMOKE BLUE
ALSO AVAILABLE IN: BLACK | OFF-WHITE | NAVAL | RED CLAY

V-RAGLAN SECOND SKIN
MICRO MODAL | TECH MESH
BLACK
ALSO AVAILABLE IN: IVORY | OFF-WHITE

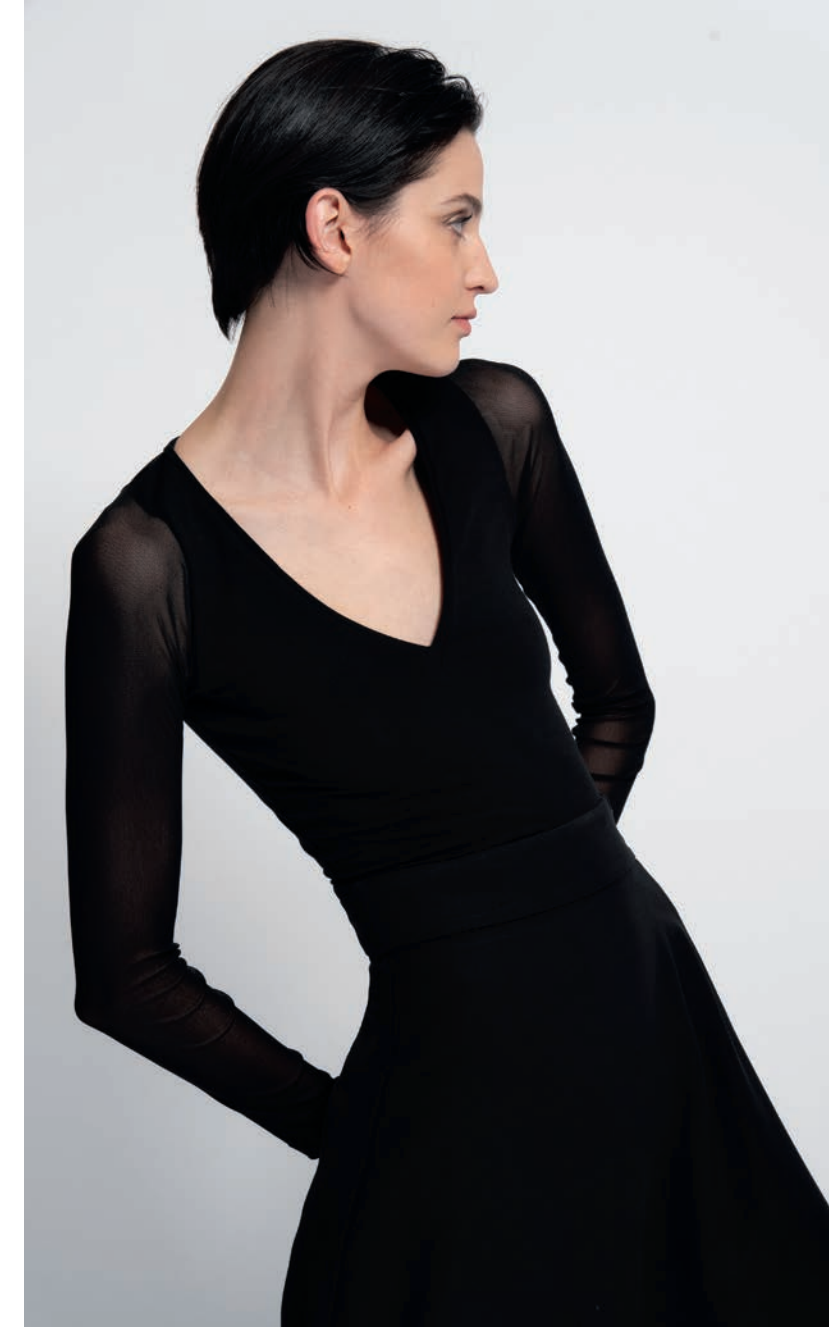
FLOW PANT
TECH VISCOSE BLEND
BLACK
ALSO AVAILABLE IN: OFF-WHITE





V-RAGLAN SECOND SKIN
MICRO MODAL | TECH MESH
BLACK
ALSO AVAILABLE IN: IVORY | OFF-WHITE

FLOW PANT
TECH VISCOSE BLEND
BLACK
ALSO AVAILABLE IN: OFF-WHITE





DRAPE LEATHER JACKET
WASHABLE LEATHER
SMOKE BLUE
ALSO AVAILABLE IN: BLACK | OFF-WHITE | NAVAL | RED CLAY

V- NECK TUNIC CAMI
SILK CHARMEUSE
HAZE
ALSO AVAILABLE IN: BLACK | MIDNIGHT | OFF-WHITE | TAUPE GREY | RED CLAY

VICTORIA PANT
TECH CREPE
BLACK
ALSO AVAILABLE IN: MIDNIGHT | SAGE





TECHNO JACKET
TECH ORGANZA / TECH PIQUE
BLACK
ALSO AVAILABLE IN: WHITE

V-NECK TUNIC CAMI
SILK CHARMEUSE
HAZE
ALSO AVAILABLE IN: BLACK | MIDNIGHT | OFF-WHITE | TAUPE GREY | RED CLAY

VICTORIA PANT
TECH CREPE
BLACK
ALSO AVAILABLE IN: MIDNIGHT | SAGE





GLOVE JACKET
WASHABLE LEATHER
BLACK
ALSO AVAILABLE IN: SMOKE BLUE | OFF-WHITE | NAVAL | RED CLAY

REVERSIBLE HANDKERCHIEF TOP
FAILLE CREPE SATIN
MIDNIGHT
ALSO AVAILABLE IN: BLACK | CHAMPAGNE | SMOKE BLUE | SILVER GREY

VICTORIA PANT
TECH CREPE
MIDNIGHT
ALSO AVAILABLE IN: BLACK | SAGE





REVERSIBLE HANDKERCHIEF TOP
FAILLE CREPE SATIN
MIDNIGHT
ALSO AVAILABLE IN: BLACK | CHAMPAGNE | SMOKE BLUE | SILVER GREY

VICTORIA PANT
TECH CREPE
MIDNIGHT
ALSO AVAILABLE IN: BLACK | SAGE





HABITA RAIN COAT W/ VEST
WASHABLE LEATHER | NYLON
MIDNIGHT/BLACK
ALSO AVAILABLE IN: CRIMSON

ARCH CINCH TOP
PEBBLE TECH CREPE
NAVY
ALSO AVAILABLE IN: BLACK | IVORY | BONE | THYME | BLONDE

VICTORIA PANT
TECH CREPE
MIDNIGHT
ALSO AVAILABLE: BLACK | SAGE





ARCH CINCH TOP
PEBBLE TECH CREPE
NAVY
ALSO AVAILABLE IN: BLACK | IVORY | BONE | THYME | BLONDE

VICTORIA PANT
TECH CREPE
MIDNIGHT
ALSO AVAILABLE: BLACK | SAGE

